

## Gain control of your execution

Our algo trading solutions can help you gain greater control of your orders, improve execution transparency and give you smart access to our unique EM liquidity.

## Execution strategies designed to meet your trading objectives

From strategies that hide in the dark and provide rapid execution, to those that trade on a volume or time trajectory. You can rest assured that our sophisticated execution tools were designed to help you realize your trading objectives.

## You can benefit from using our S2BX execution algos suite by

- Directly accessing a large, diverse and unique pool of liquidity (connected to major trading venues worldwide)
- Exploiting pricing opportunities across multiple liquidity venues through the use of sophisticated Smart Order Routing (SOR) logic
- Taking control of your orders using a transparent and proven alternative to risk transfer
- Using tools designed to help minimise Signalling Risk / Decrease Market Impact / Reduce Slippage
- Utilising our post trade (TCA) Transaction Cost Analysis Report to transparently analyse your execution performance
- Leveraging the Standard Chartered name in the market place

## Algorithm Strategies

<b>TWAP</b>	Follows a linear schedule to execute an order evenly over a specified time period. It aims to minimize slippage / variance against a TWAP reference.
<b>VWAP</b>	Executes an order over a specified time period, following the historical volume profile to execute a larger portion of the order when the market is more liquid.
<b>INLINE</b>	Aims to execute a larger portion of an order when the market is more liquid. Unlike VWAP, it estimates the end time of the order based on historical volume profile and a specified participation rate.
<b>ARRIVAL</b>	Executes an order based on specified aggression level attempting to minimize slippage / variance against the arrival mid price.
<b>FLOAT</b>	A passive execution algorithm that slices an order and posts passively up to the mid price, re-pegging with market movements.
<b>ADAPTIVE TAKE</b>	An opportunistic algorithm for execution of larger orders with specified aggression level. It executes aggressively in a controlled way without sweeping through the book whilst also posting passively to source liquidity intelligently.
<b>ADAPTIVE SWEEP</b>	A liquidity seeking algorithm that uses our smart order routing logic to attempt to source liquidity aggressively but efficiently up to the specified limit price
<b>FIX</b>	A trajectory style algo that trades in a 5 minute interval around the 4pm London FIX. Using the 'auto skew' feature it will automatically front-weight or back-weight the trajectory based on price movement in the first minute of the trade.

## Liquidity

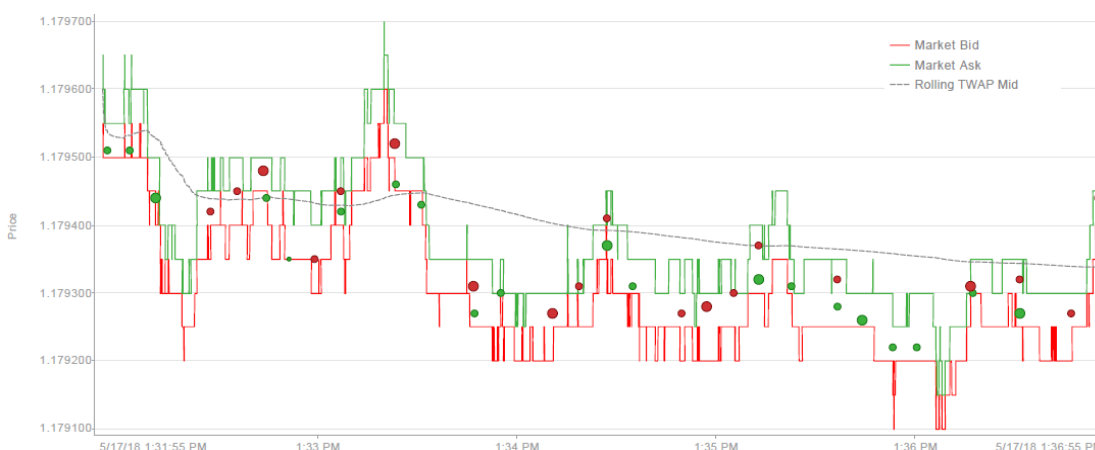
- SC offers Intelligent Order Routing across a large, diverse and unique set of liquidity pools for superior execution
- The algo may be configured to execute against a mix of SCB and external liquidity or either independently

## Supported Currency Pairs

Our FX algorithms are available in all G10 currencies and deliverable emerging market currencies including CNH, HKD, SGD, MXN, THB, TRY and ZAR

## Transaction Cost Analysis (TCA)

- Our algos are designed to help you achieve Best Execution and our post trade TCA report will enable you to look in detail at the cost, quality and performance of your trade.
- We use transparent and standardised metrics to demonstrate how the algo executed and give detail of its performance.
- As an important feedback mechanism for further improvements our experts can walk you through the algo's performance in detail.
- Should you require independent analysis, we partner with BestX whose goal is to provide the industry standard for FX TCA.



## Benchmarks

- Arrival
- TWAP
- PGWAP (Paid/Given Weighted Average Price)
- Spread Paid
- Quoted and Traded High and Low

## Algo Expertise

We are a team of experienced professionals that can help you implement strategies designed to best meet your trading objectives. Our quants continuously conduct research on how best to enhance our client algos. Why not leverage our expertise and allow us to speak to you about how we can help you achieve your trading objectives?

### Contact: eCommerce Sales

Singapore: +65 6557 8164  
Hong Kong: +852 3983 8001  
London: +44 207 885 5265  
New York: +1 212 667 0147  
eCommerceSales@sc.com

### Contact: Client Services

Singapore: +65 6622 7192  
Hong Kong: +852 3013 4426  
London: +44 203 564 6553  
New York: +1 917 4217 292  
eclientservices@sc.com

**Disclaimer:** This document is issued by Standard Chartered Bank (SCB) or its affiliates. This is not directed at Retail Clients in the European Economic Area as defined by Directive 2004/39/EC. SCB is a firm authorised by the Prudential Regulation Authority and regulated by the Financial Conduct Authority and Prudential Regulation Authority.

This document is prepared by Sales and Trading Personnel for the purposes of marketing, information and discussion only; it is not independent investment research and is not subject to any prohibition on dealing ahead of the dissemination of investment research. It does not constitute an offer to transact in any security or financial instrument, does not constitute investment advice or a source of any specific investment recommendations, and has not been prepared with regard to the specific investment objectives or financial situation of any particular person. SCB shall not determine the suitability for you of any potential transaction described herein. You are advised to make your own independent judgment (with the advice of your professional advisers as necessary) with respect to the risks and consequences of any matter contained herein. Any values shown herein are indicative and do not represent any obligation or commitment by SCB to transact, and may not reflect factors such as hedging and transaction costs, credit considerations, market liquidity and bid-offer spread, all of which could be relevant in establishing a firm price quotation.

SCB does not provide, and has not provided, any investment advice or personal recommendation to you in relation to the transaction and/or any related securities described herein and is not responsible for providing or arranging for the provision of any general financial, strategic or specialist advice, including legal, regulatory, accounting, model auditing or taxation advice or services or any other services in relation to the transaction and/or any related securities described herein. Information contained herein, which is subject to change at any time without notice, has been obtained from sources believed to be reliable. We do not represent or warrant that this information is accurate or complete and it should not be relied upon as such. Past performance is not necessarily indicative of future performance. SCB and/or its affiliates and subsidiaries may have position(s) in any of the underlying(s), indices, instruments or currencies contained herein. Provision of services or offering of products may be subject to the regulatory requirements of each jurisdiction and you should check with your relationship manager or usual contact whether a specific product or service is able to be offered. We expressly disclaim any liability and responsibility for any losses arising from any uses to which this communication is put and for any errors or omissions in this communication.

© Copyright 2017 Standard Chartered Bank. All rights reserved. All copyrights subsisting and arising out of these materials belong to Standard Chartered Bank and may not be reproduced, distributed, amended, modified, adapted, transmitted in any form, or translated in any way without the prior written consent of Standard Chartered Bank.